



The London
Acorn School

Curriculum Plan
Birch – Summer 1

Programmes of Study

Year 3

Birch 'I am a useful member of my community'

Summer 1

Unit title : GARDEN of EDEN

Literacy Genres [Stories with familiar settings: Bill's New Frock \[Babcock\]](#). [Anne Fine \(3 weeks\) Reports: \(3 weeks\)](#)

[Shape Poetry & Calligrams: \(1 week\)](#)

[Verse: the sun with loving light](#)

Reading Enhancements

[Adam and Eve & the garden of Eden- Jane Ray](#)

Literacy

Grammar

To write in clear sentences using capital letters and full stops accurately.

Writing to entertain:

Stories (Including re-telling, personal experiences real & fictional)

Descriptions

Poetry

In character role (letter to recount / dairy entry)

Writing to inform:

Recount – First-hand experience

Instructions – First-hand experience

NCR – Information booklet

Explanation – Observed process

Letter

Maths

Addition and subtraction

- Add 3-digit and 1-digit numbers mentally, using number facts; subtract 1-digit numbers from 3-digit numbers mentally using number facts; add and subtract
- column addition
- subtracting by counting up, and choosing appropriate methods to solve problem
- Add 3-digit and 2-digit numbers using mental strategies
- add two 3-digit numbers using mental strategies or by using column addition
- use reasoning, trial and improvement to solve problems involving more complex addition
- Use column addition to add three 2-and 3-digit numbers together and four 2-and 3-digit numbers together
- subtract 3-digit numbers using counting up
- solve word problems choosing an appropriate method

Progression in Reading Comprehension
Vocabulary /Inference/ predict/ explain/
retrieve/ summarise

- Add 3-digit numbers using column addition
- solve problems involving measures
- solve subtractions of 3-digit numbers using counting up

Problem solving, reasoning and algebra

Fractions, ratio and proportion

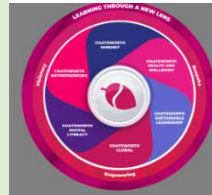
- compare and order fractions with the same denominator
- begin to recognise equivalences of $\frac{1}{2}$
- add and subtract fractions with the same denominator
- Decimals, percentages and their equivalence to fractions
- finding tenths of amounts
recognise tenths and equivalent fractions
find one-tenth and several tenths of multiples of 10
and begin to find one-tenth of single-digit numbers

Art

MIXED MEDIA - COLLAGE

- Study the work, style and design of the artist Gayle Gerson
- Use the natural environment as a source for inspiration
- Use photography and sketching to capture observations
- Use visual and tactile elements including colour, pattern and texture, line and tone, shape, form and space to create a woodland collage in the style of Gayle Gerson

Humanities





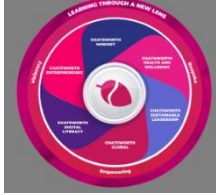
Chatsworth
Global: global
biomes

Geography

BIOMES

- Know that a biome is a climatically and geographically contiguous area with similar climatic conditions, such as communities of plants, animals, soil organisms, and viruses.
- Describe and understand the key aspects of physical geography including climate zones, biomes and vegetation belts in relation to the Eden Project
- Describe and understand key aspects of human geography including the distribution of natural resources such as water
- Use fieldwork skills to observe and record and present the human and physical features of the Eden project

			<ul style="list-style-type: none"> Understand how the human features (and design) of the Eden project, impacts on the sustainability of biomes.
<p>Relationships and Health</p>  <p>Chatsworth Mindset: self-esteem and identity</p>	<ul style="list-style-type: none"> Know that healthy friendships are positive and welcoming towards others and do not make others feel lonely or excluded Know that most friendships have ups and downs and that friendships can be repaired and strengthened Know what a stereotype is, and how stereotypes can be unfair, negative or destructive Explore the concept of 'real boy', 'real girl' Know that there are similarities and differences between people Support and show acceptance for what makes people special and unique 	<p>Forest School</p>  <p>Chatsworth Sustainable Leadership: advocacy for local area</p>	<p>Song : Dem Bones ! Compare skeletons of different vertebrates, obs classification invertebrates/vertebrates, use of ground art, song. Bat & Moth game. Extract pigments from stone/charcoal and use for 'rock paintings'. ID elder wood, make beads, use for crafting dragons, necklaces etc.</p>
<p>Design and technology / Woodwork</p>	<p>Wood work projects connected to Main lesson themes in addition to projects derived from pupil interests</p> <p>Cutting animal shapes to make a 'garden of Eden'</p>	<p>Science</p>	<p>BIOLOGY – PLANTS</p> <ul style="list-style-type: none"> Describe the functions of different parts of flowering plants: roots, stem/trunk, leaves and flowers. Know the requirements of plants for life and growth (air, light, water, nutrients from soils and room to grow) and how they vary from plant to plant. Know how water is transported within plants. Know the life cycle of flowering plants including pollination, seed formation and seed dispersal.
<p>Religious Studies</p>	<p>Pilgrimages</p>	<p>PE</p>	<p>ROUNDERS AND CRICKET/ SUMMER GAMES</p> <p>Develop ball skills, field skills, develop team working skills.</p>



Explore Different journeys with religious meanings in different faiths

Lourdes

Hajj

Chatsworth Global: respect for different pilgrimages around the world



FITNESS
Develop and improve physical activity for sustained periods of time. Learn skills to solve problems, individually and as part of a team. Increase and improve on longevity of physical activity.

Chatsworth Health and Wellbeing: physical fitness and stamina

French

- To continue to develop understanding of French pronunciation
- Learn to ask a question
- To learn 1st person singular of new verbs
- To construct sentences using these verbs
- To re-cap what has been learned

Music

- Pupils will develop their performing, composing and listening skills
- Pupils will learn about the interrelated dimensions of music
- Pupils will use a range of classroom instruments to create and manipulate sounds, develop a strong sense of pulse and rhythm and establish good ensemble performance skills.
- Pupils will sing a wide number of songs and develop their vocal range, intonation, articulation, blending and a joy for singing.
- Pupils will learn to analyse music using age-appropriate musical vocabulary and to apply this knowledge in a musical context through solo and small group performance and composition activities.

Trips and or events